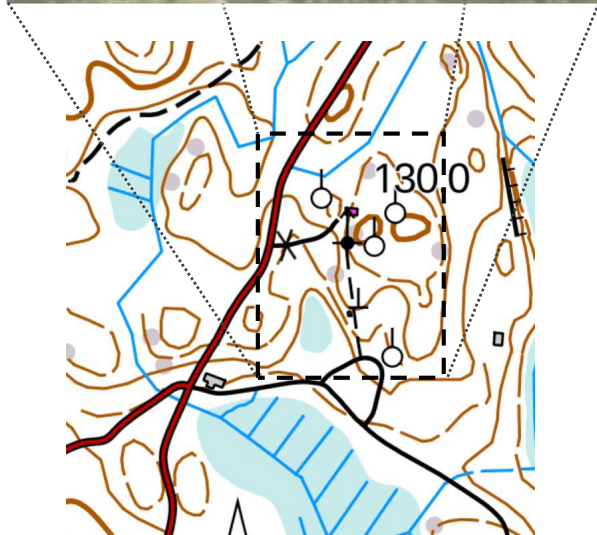


- A Main cottage
- B Mast(128 m)
- C Flux tower and cottage
- D Heavy tower (35 m)
- E Hitu cottage
- F Container area
- G Thinning control

CP1... ..4 ICOS continuous plots

- 0 Photo 0 tower (disassembled way back)
- 1 Photo 1 tower (partially disassembled in 2018)
- 2 Photo 2 tower
- 3 Photo 3 tower



WHEN installing new field instruments and/or updating documentation, please specify the location, either by using above mentioned locations and/or by specifying the location by some other means (=give coordinates, tell distance&direction from some know location, specify the height at a tower etc.)

Please use this as a template for creating a map as a documentation for your installations – or create your own map that matches your requirements

Originally made by Juho Aalto, 1/2021