

## How to Get Better Fluorescence Images with Your Widefield Microscope.

A Methodology Review



Seeing beyond

# How to Get Better Fluorescence Images with Your Widefield Microscope.

## A Methodology Review

Authors: Dr. Markus Sticker, Dr. Rebecca Elsässer,  
Dr. Markus Neumann, Dr. Horst Wolff  
Carl Zeiss Microscopy GmbH, Germany

Date: March 2020

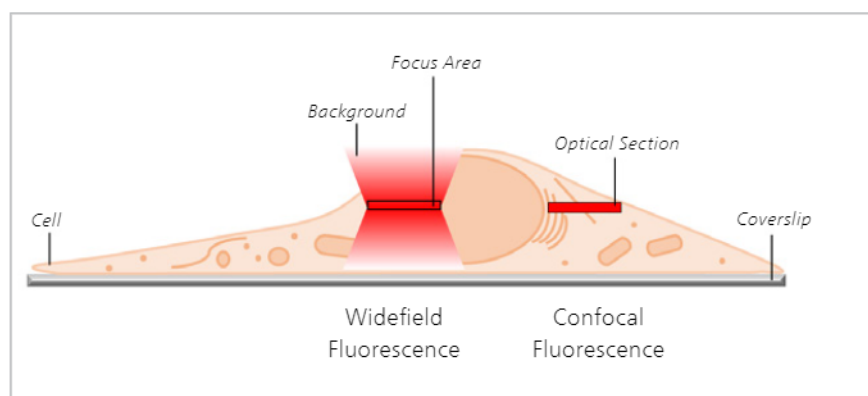
For decades, fluorescence microscopy has been an invaluable tool in life sciences research, with new variations and implementations emerging almost every year. Laser scanning microscopy, airyscanning, structured illumination, light field and light sheet microscopy are among the many methods that have been developed through the years to overcome the limitations of the original widefield microscopy setups.

These more recent techniques have brought new insights into biological samples and enabled new discoveries. However, we should not forget that even comparably simple and inexpensive widefield microscopes can help to extract meaningful data from many samples.

In this article we focus on some popular image processing methods. These techniques have the potential to make widefield microscope systems more powerful and versatile so long as their limitations and pitfalls are known. Simple deblurring methods—for example, background subtraction, computational clearing, unsharp masking and the like—deliver a quick and clearer preview of the sample while more accurate deconvolution models yield higher resolution, fewer artefacts and more quantitative results.

### Limitations of widefield microscopy

The most obvious limitation of widefield (WF) fluorescence microscopy is the out-of-focus blur in the image that essentially limits contrast and prevents us from clearly identifying structures and objects of interest. In a WF microscope, a beam of light simultaneously illuminates the whole field-of-view to excite all the fluorophores it contains. The beauty of this approach is that all parts of the specimen are viewed simultaneously and the image can be captured simply and rapidly with a camera. However, due to diffraction-limited optics and the projection of out-of-focus light



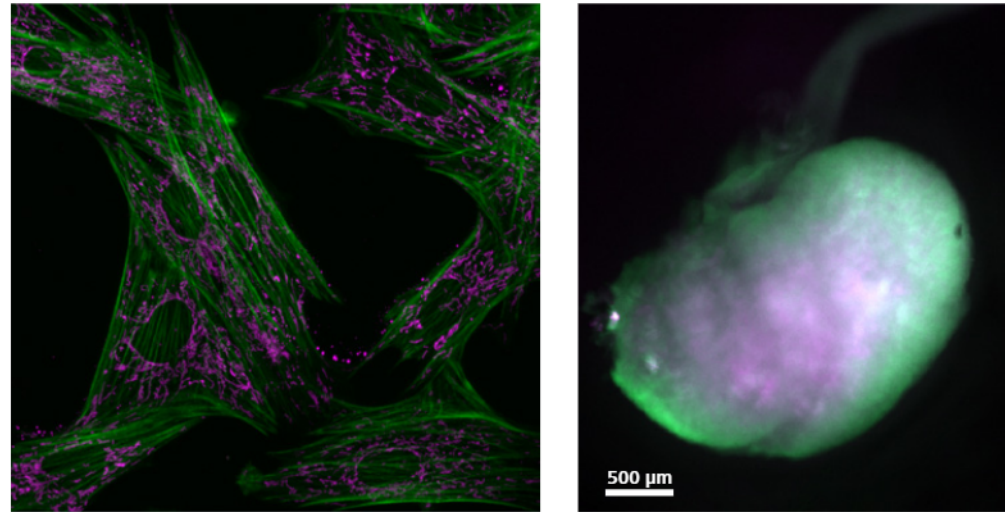
**Figure 1** In widefield microscopy (left) the captured image contains light from the focus area as well as significant background signal from out-of-focus areas above and below. Confocal techniques (right) can employ various means to avoid this background contribution and thereby generate an image with better contrast.

onto the camera-sensor, this usually results in images of low contrast, especially with thicker and more densely-labeled specimens. Optical sectioning methods, such as confocal laser scanning microscopy or structured illumination microscopy, exclude out-of-focus light from the image and thereby will typically show better contrast and reveal more details (see Figure 1).

Using a widefield setup typically does the job for thin specimens, e.g. layers of single cells or isolated organelles. When the signal is sparse and the objects are thin, the resulting widefield images can reveal as much information as those captured with costlier, more highly sophisticated equipment (see Figure 2). On the other hand, most widefield microscopes can't image thick tissues, 3D cell culture, spheroids or whole organisms with sufficient contrast. These samples are usually scattering the light a lot and multiple layers of fluorescent structures make it hard to distinguish details in a 3D volume.

### Solutions for 3D volumes

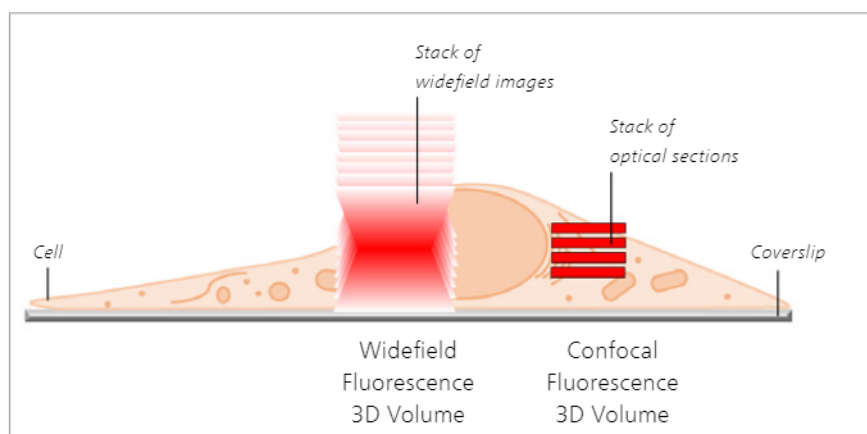
Figure 1 shows the situation that occurs when only a single image of the sample is recorded. There are multiple



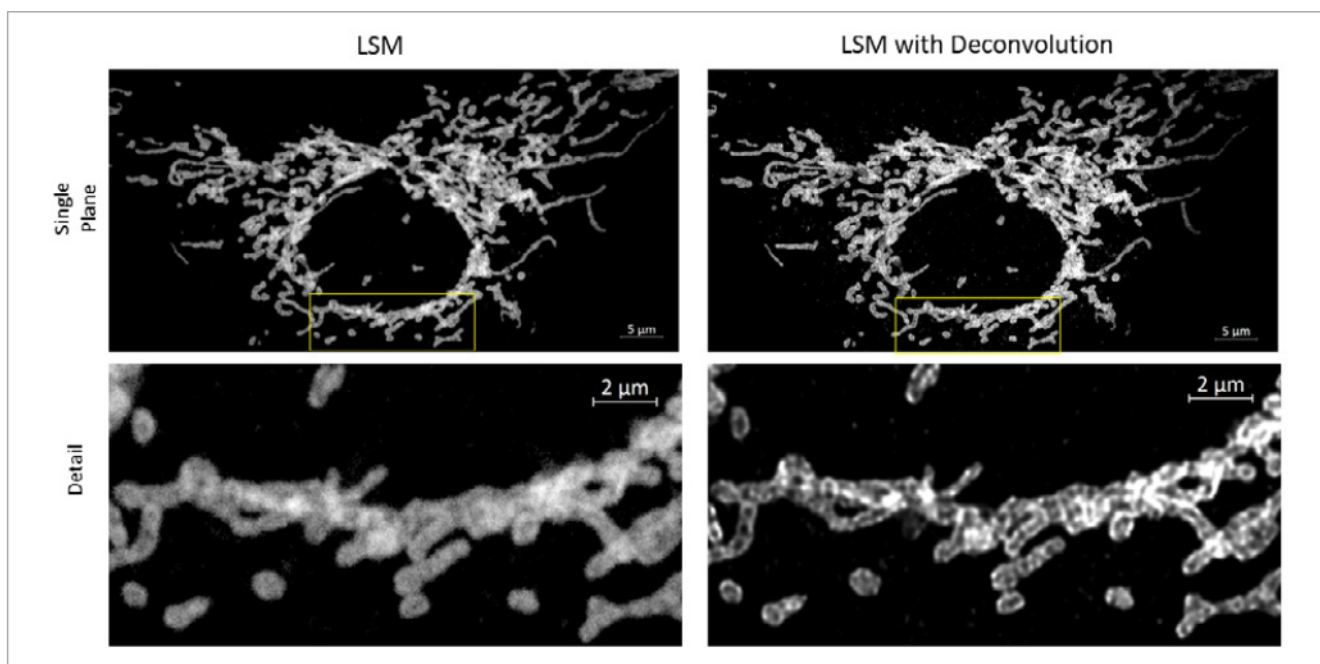
**Figure 2** Widefield images of cultured flat epithelial cells (actin filaments in green, mitochondria in purple) of a rat kidney. This comparison depicts the challenges posed to a widefield instrument by a thick and scattering sample like the rat kidney.

possibilities when a 3D volume is sought. Optical sectioning techniques can be used to generate a stack of images that can then be rendered into a 3D object. For widefield instruments, a technique called *deconvolution* has been available in microscopy for more than 20 years. In contrast to the early-2000s, today's deconvolution microscopy will give a result almost instantaneously as GPU-based processing with latest computer hardware accelerates the computation tremendously.

Deconvolution microscopy is one of the best described processing methods in the microscopical sciences and is based on mathematical models that aim to reverse the distortions that take place in optical instruments. There are numerous variants of deconvolution algorithms and they all come with their own advantages and disadvantages, essentially differing in reconstruction quality and speed. Since there is not one perfect method for all image conditions, ZEN imaging software implements know-how from more than 20 published deconvolution variants to deliver best user experience and valid results at all times. A major benefit of the widefield deconvolution approach is that no light from the sample is excluded during image acquisition; the maximum number of photons are collected and later reassigned to their real places of origin. This reveals many structures in the resulting 3D volume that have not been visible before and so were lost in the out-of-focus light. Deconvolution microscopy is therefore also known as a *signal-inclusive* method.



**Figure 3** Acquisition of a widefield image z-stack (left) supports processing by deconvolution to reconstruct a 3D volume—as opposed to (right) a 3D object creation with an optical sectioning approach.



**Figure 4** Mitochondrial membranes labeled with TOMM22, acquired with ZEISS LSM system utilizing fast linear scanning (left). A single plane of the dataset is displayed before (left) and after the z-stack was processed with a constrained iterative deconvolution in ZEISS ZEN imaging software, revealing additional details and increasing the resolution (right).

Notably, it might take a bit longer to acquire a single optical section than it does a widefield image since, for example, structured illumination requires at least three images per section to be acquired and a single point scanning confocal laser scanning approach is usually slower than simply snapping a camera image.

It is important to note that the deconvolution of widefield images must not be regarded as a replacement for an optical sectioning system. Instead, any kind of microscopical image will benefit from deconvolution, including optical sections (for example, from laser scanning confocals, spinning disk confocals or structured illumination images). So long as the right mathematical model is used, deconvolution will always help restore the signal from photons to the exact place where they belong (see Figure 4), and this will increase contrast

and resolution. Of course, one side-effect in the case of widefield images is that the out-of-focus blur disappears.

When deciding which method to choose, you have many aspects to consider if a 3D volume is ultimately needed. These range from the desired time and spatial resolution to spectral flexibility, penetration depth and various other factors. The ZEISS family brochure of 3D instruments provides both an overview and a guideline for making this decision.

#### Sharp images in 2D

What do you do when all you need is a crisp 2D image—whether in the form of a time series or as a large tiled image of a sample? As illustrated in Figure 2, very flat objects usually continue to reveal their biology quite well with a widefield image.

Still, there will be a certain background fluorescence that negatively influences the aesthetic aspects and contrast. The human eye likes crisp details along with sharp contrasts and colors.

A first and really quite simple way to make a fluorescence image look more appealing and reveal some additional details is to adjust the display curve. So long as it is not exported as a TIF or JPG image, this will not in itself change the image data at all, but will only influence the look of the image on the screen. As out-of-focus haze in widefield images is typically less intense than the in-focus-structures, this approach can work to a certain extent. However, it fails where in- and out-of-focus structures are lying on top of each other and it is also quite an arbitrary procedure that depends ultimately on the operator's taste. Therefore, more powerful methods are usually called for.

Over the past few decades, numerous processing methods have been developed for delivering crisper, sharper images. These procedures can have several primary goals—for example, to remove shading, improve contrast, remove blur or enhance certain structures. All, of course, with the ultimate goal of making the image more suitable for inspection or presentation.

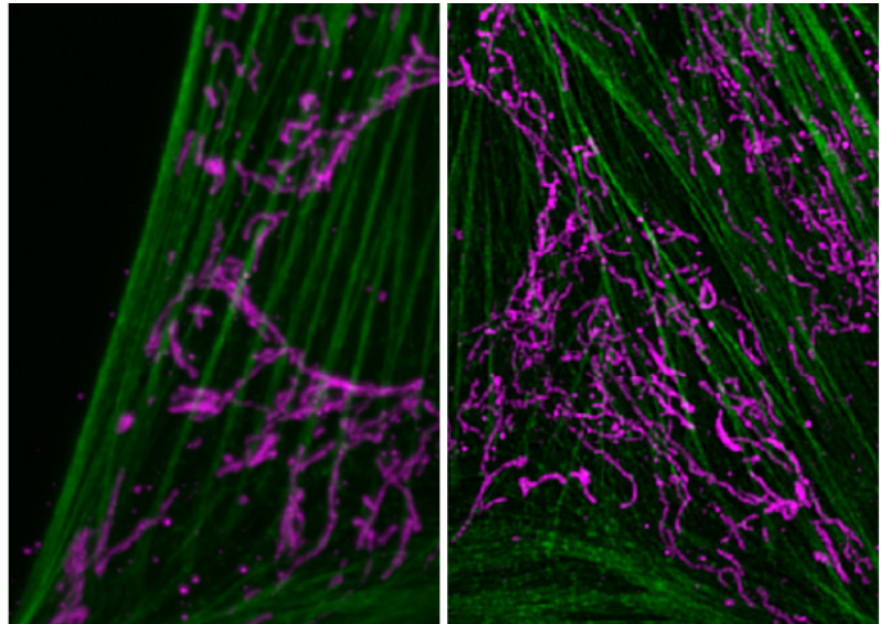
However, before applying these methods to your microscopic images, first consider the impact they will have on the image itself. Many post-processing steps introduce noise (to a varying degree) to the image and simple post-processing steps can never increase its information content.

Nevertheless, a processing step might be exactly what is needed to make the information and details that are present in an image more apparent—or just to make it more appealing visually.

Let's take a look at some of the most commonly used processing methods. These could be categorized as “deblurring” methods and they all have one thing in common: unlike deconvolution, they will work on one image after another without including any 3D volume information or a mathematical model of the distortions generated in the instrument that acquired them.

### Unsharp Masking

Figure 5—a detail from the cells we saw in Figure 2—shows what a relatively simple procedure called “edge detection” can do to any widefield fluorescence image. On the left, we see the raw, unprocessed region of interest (ROI). On the right, the same ROI is shown after a single processing step



**Figure 5** Unprocessed widefield image of a cell (left) and the same image processed with unsharp masking (right). Actin filaments in green, mitochondria in purple.

using the unsharp masking method, introduced by Russ in 1994. Here, it is implemented in ZEISS ZEN imaging software (available free in the ZEN lite package). The effect is quite impressive and at first sight, the unprocessed image might even look a bit out of focus next to the much sharper, processed image.

This impression is a result of human beings being hard-wired to look for sharp edges and lines, and to consider these to be more detail-rich than fuzzier representations of the same image. As previously stated, unsharp masking is like many post-processing methods in that it will not add to, but instead will reduce the information content of the image. The loss of information is easily understood if we look at the way this sharpening is achieved. The algorithm subtracts an unsharp mask from the specimen image. The mask is simply an artificially blurred image that is produced by applying a Gaussian low-pass filter to the original image. Consequently, this

procedure inevitably increases noise in the image. Nevertheless, edge-enhancing methods do a good job in making geometrical structures stand out more prominently, especially for thin and transparent objects like 2D cell cultures. As a free bonus, the unsharp mask filter also suppresses low frequency details and can be used to correct shading throughout an image. This is often visible in the form of slowly varying background intensities.

### No-neighbor/Nearest-neighbors

These two processing methods are sometimes classified as deconvolution methods. However, although the nearest-neighbors method in particular shares some characteristics with real 3D deconvolution procedures, both processing methods are filters designed to subtract the estimated blur from the image. The early concept was introduced to light microscopy by Castleman in 1979 and first applied practically by Agard in 1984.

The no-neighbor method achieves deblurring by looking only at the image itself, whereas the nearest-neighbors method also takes into account information from one plane above and one below, which means it must acquire a z-stack. It attempts to remove the blur contribution in the center focal plane by subtracting defocused versions of the adjacent slices including knowledge of the PSF, and this leaves only sharp features behind.

The no-neighbor method is similar although it only considers a single slice. It is therefore equivalent in principle to an unsharp masking, which we have already discussed. On the positive side, both methods require very little computing power and are fast (virtually executed in real-time), but they are also very limited in their capabilities and often mishandle blurred light. They also reduce signal intensities (usually around 50–90%) across the image and should only be used for a quick check of the image when, for example, you want to further optimize image acquisition parameters.

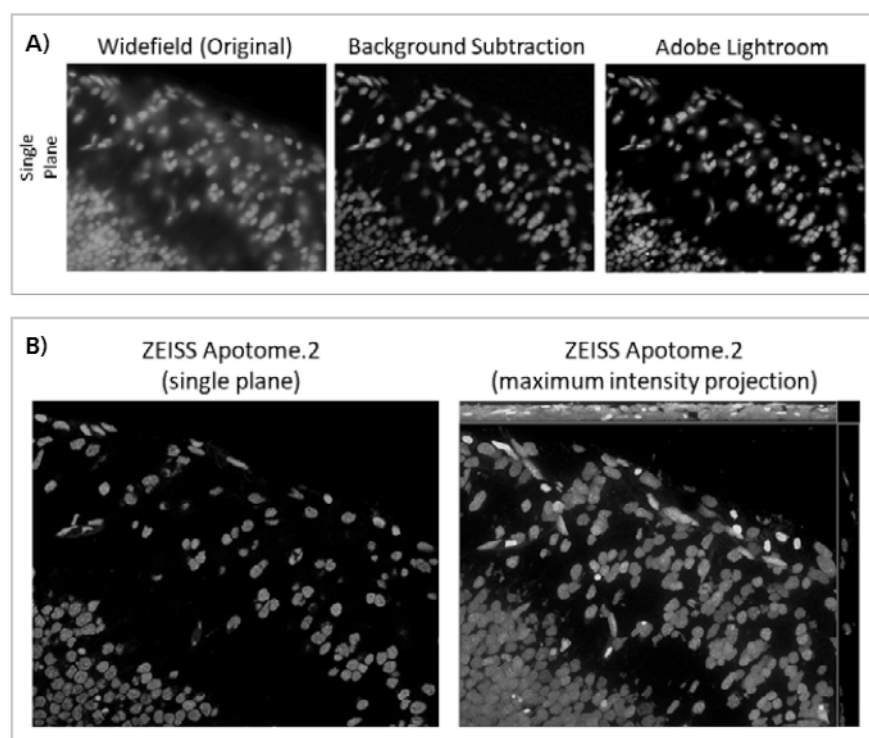
### Background subtraction

This is a very effective way to increase contrast in widefield images, offering many possibilities for improving a WF-image by using image and computational processing to reduce the background. One method that has been around for a very long time is the so-called rolling ball background subtraction algorithm. This was inspired by Stanley Sternberg's article, "Biomedical Image Processing" in *IEEE Computer* (January 1983). It removes continuous or uneven background from images by determining a local background value

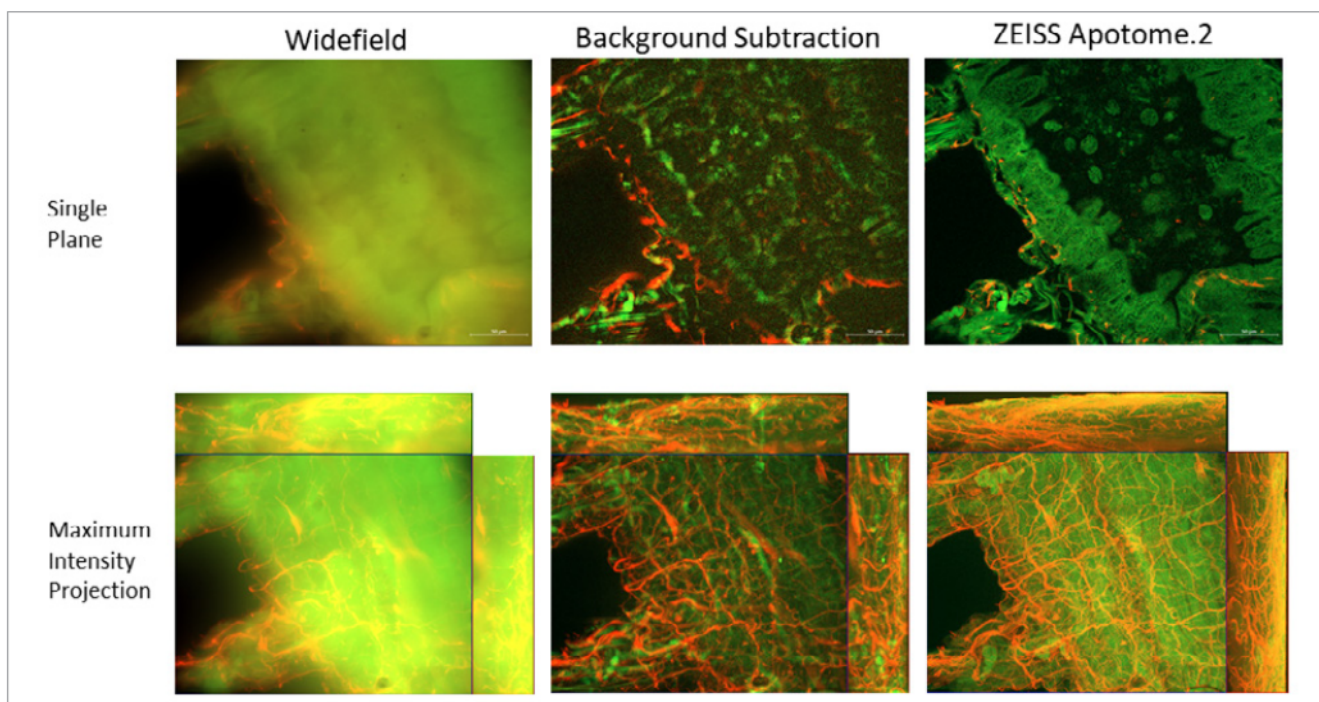
for every pixel, averaged over a very large ball around the pixel. The value is thereafter subtracted from the original image. Thus the most important parameter is the rolling ball radius, which should be at least as large as the radius of the largest object that is not part of the background. It is quite easy to estimate the parameter when the magnification of the system is known, but it can never be accurate when the sample types change or the structures in them are uncommon. The so-called instant computational clearing (ICC), used in products of Leica Microsystems marketed as "Thunder\* Imager", is based on the principle of separating out the background and subtracting it from the image.

No-neighbor and rolling-ball methods as well as ICC employ filter algorithms to identify and remove image content that is likely to be caused by out-of-focus blur. This removal can also be preceded by a nearest-neighbor deblurring to eliminate even more "blurry" structures.

Figure 6 shows fluorescently-labeled nuclei, acquired with an inverted widefield setup. The original widefield image has then been processed to clear the haze from the image by either a background subtraction based on the rolling ball algorithm (as implemented in ZEISS ZEN imaging software) or by a series of image processing steps the photo processing software Adobe Lightroom®.



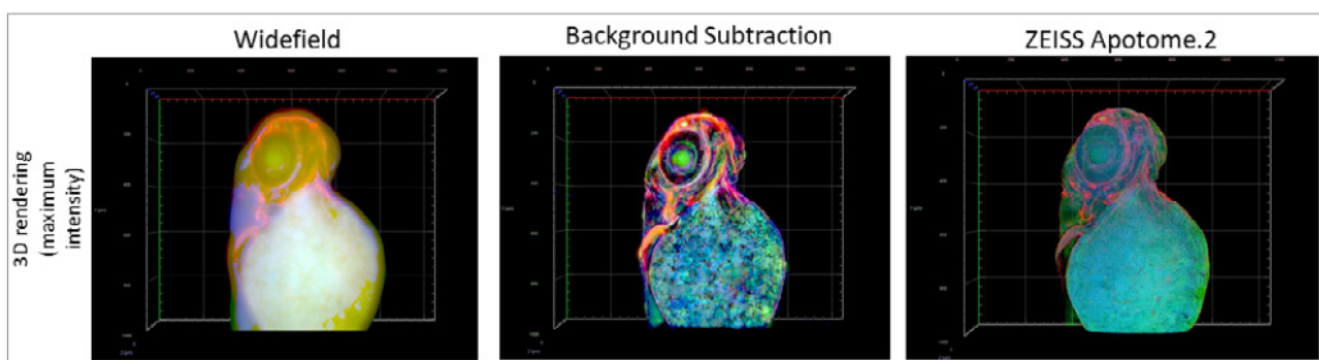
**Figure 6** A) Grayscale images of fluorescently-labeled nuclei. Out-of-focus blur is visible in the original widefield image (left), as there are multiple layers of nuclei above and below the focus plane. Rolling ball background subtraction was carried out with the original WF image in ZEISS ZEN lite (middle), eliminating most of the haze in the image. A series of adjustments (90% dehaze, 80% clarity, 80% texture, 80% blacks, 10% contrast) to the original WF image have been made with the software Adobe Lightroom® (right), resulting in a very similar elimination of haze, as compared to the background subtracted image in the middle. B) As a gold standard, the same image plane with a maximum intensity projection is shown, based on a stack of optical sections acquired with ZEISS Apotome.2.



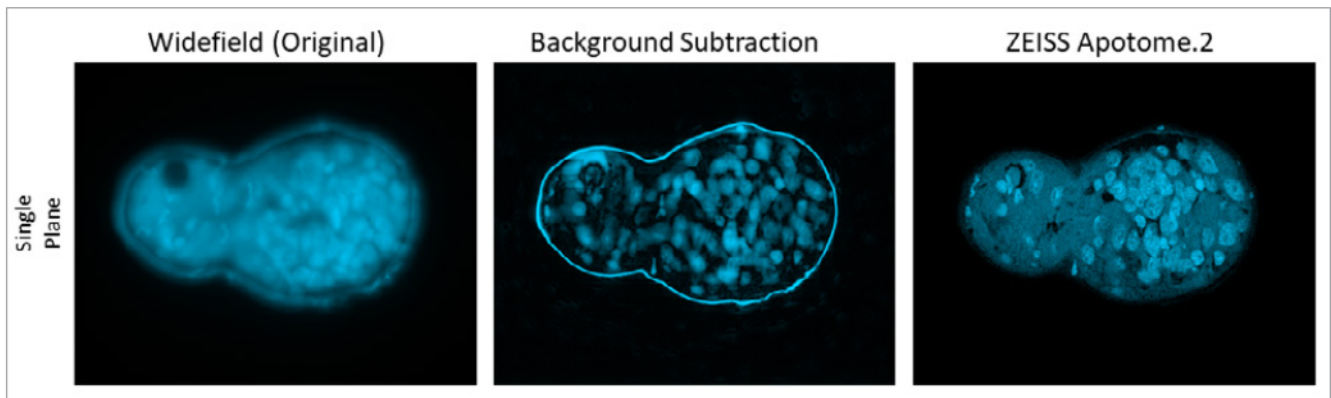
**Figure 7** Single planes and maximum intensity (ortho) projections of a widefield image of polychaete worm (*Platynereis dumerilii*) are stained in green and red (left). The image stack was processed with a rolling ball background subtraction in ZEISS ZEN lite and the result is shown in the middle. Compared to the widefield image, more structures are visible in the background subtracted dataset, but a lot of details are missing in relation to the images acquired with the optical sectioning system Apotome.2 (right). In addition, some of the compact green structure on the edges seems to have eroded. Image stack height: 160  $\mu\text{m}$ .

As we can see in Figures 7 and 8, simple background subtraction leads to removal of the haze in the images, but does not reveal all fine details in them. Also, the resolution of the image is not enhanced by the background subtraction. This becomes especially apparent when the same image is not only compared to a widefield image, but also to one that has been acquired or processed with more advanced techniques such as 3D deconvolution and/or optical sectioning methods. One further problem that is sometimes seen with background

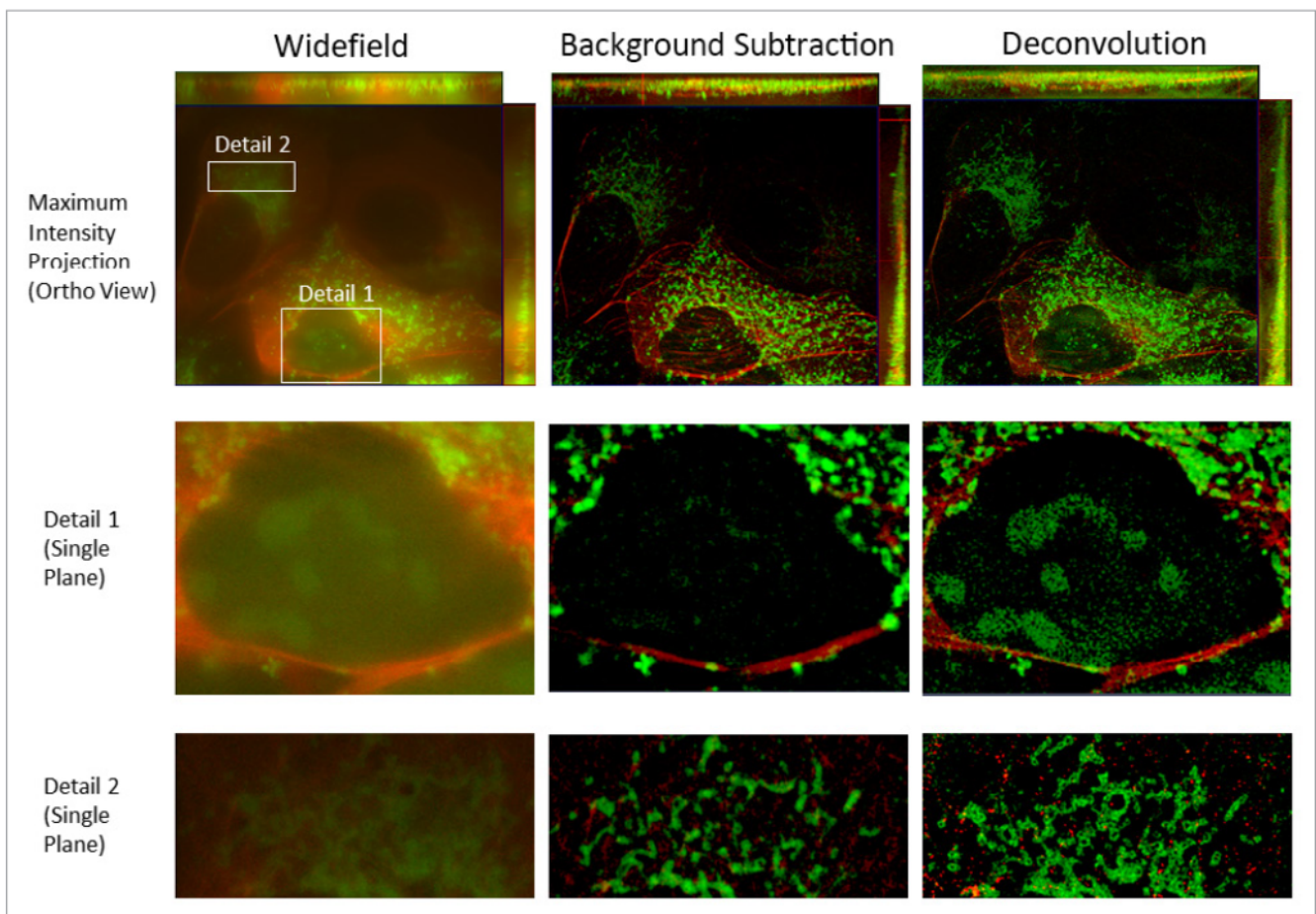
subtraction, especially with the rolling ball method, is an overrepresentation of faint spots in the resulting image as well as box-like artefacts. To reduce this, several modifications to the rolling ball algorithm have been made; for example, the floating ball (Bio-Rad), a modification of a combination of fuzzy and rough set theory (Cai et al, 2015). In addition, many efforts have been made to subsequently remove artefacts from images that are caused by rolling ball and lowpass filtering (Huang et al, 2012).



**Figure 8** 3D rendering of a z-stack of a zebrafish, stained in blue, green and red (left). The image stack was processed with a rolling ball background subtraction in ZEISS ZEN lite and the result is shown in the middle. Compared to the widefield image, more structures are visible in the background subtracted dataset, but a lot of details are missing in relation to the images acquired with the optical sectioning system Apotome.2 (right). Image stack height: 120  $\mu\text{m}$ .

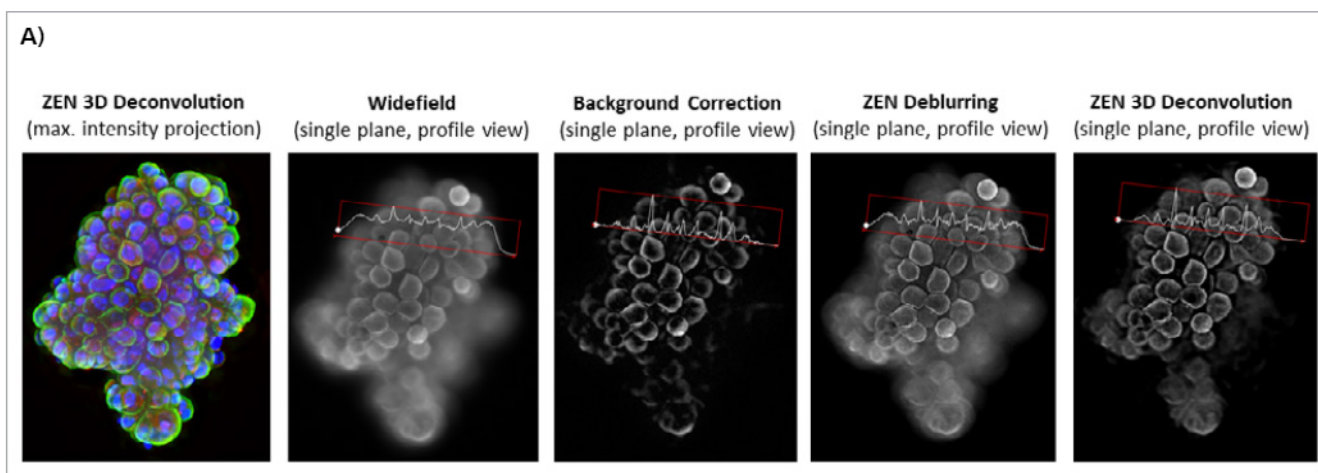


**Figure 9** Giant liver fluke stained with Hoechst 33342. The homogeneous fluorescence in the inner parts of the widefield image (left) poses a serious problem for background correction algorithms (center). Some structures remain, but generally there are too many black spaces between the cells. This becomes visible when comparing the results to an optical section, acquired with ZEISS Apotome.2. Notably, the prominent rim around the structure, as seen by the background corrected image in the center panel, is an artifact of interference in the widefield image, which is not seen with an optical sectioning system.



**Figure 10** Overview and two regions of interest of a z-stack of cells (mitochondria in green, EB3 microtubule tips in red) was acquired with a widefield setup (left). Center: Background subtracted dataset from the left. Right: 3D deconvolved dataset from the left (constrained iterative method in ZEISS ZEN imaging software). In the overview, background subtracted and deconvolved datasets look very similar, but differences become visible in the detailed regions of interest. In Detail 2, it becomes apparent that the spatial resolution of the deconvolved dataset is much better compared to the background corrected image. In Detail 1, structures that are visible in the widefield image can also be observed in the deconvolved image stack, but not with the background subtracted data, no matter how much you increase display contrast and brightness.



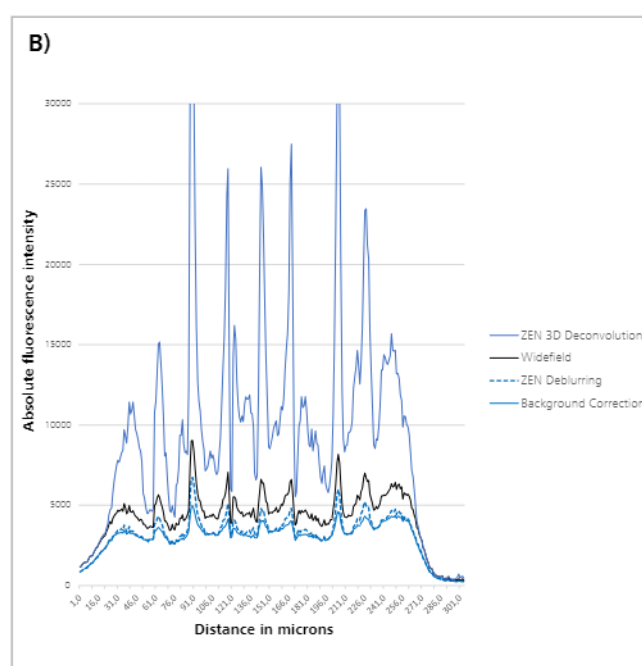


No matter how much these techniques are improved, their general hallmark and working principle is signal exclusion, essentially based on feature size. This can lead to artefact generation and loss of information. A good example of lost signal is the “hole” in the inner parts of larger organisms or spheroids that are generated by background correction or computational clearing. The homogeneous fluorescence in the inner part has properties similar to the homogeneous blur of out-of-focus light and it is therefore “removed” (see Figure 9).

Another example on a smaller scale is shown in Figure 10. Deconvolution reproduces the very crisp structures of mitochondria and microtubules while also showing the mitochondrial membrane stains. It also shows quite well the nucleolar-like structures that are hardly visible in the cell nucleus. This weak signal is eroded and entirely removed by background correction and the information is lost.

In addition, all background correction methods change the signal-to-background ratio, which means that the results of an x-fold increase in a fluorescence response after background subtraction must not be directly compared to an x-fold response in an image without background subtraction applied.

Figure 11 depicts the changes in intensities compared to a widefield image after undergoing either background correction, deblurring (nearest-neighbor) or a full 3D deconvolution. As far as we can tell, the overall profile looks similar, but the advantages of reassigning photons from an entire z-stack to a 3D deconvolution over simply removing the background are quite obvious.



**Figure 11** Z-stack of tumor spheroids (height: 100  $\mu\text{m}$ ) was acquired with ZEISS Celldiscoverer 7 and a 5x/0.35 objective with 2x tube lens. Nuclear counter stain (blue), and green and red fluorescence.

**A)** From left to right: maximum intensity projection of 3-color fluorescence image after constrained iterative deconvolution in ZEISS ZEN; single plane of a widefield stack (green channel) with profile line; single plane of a widefield stack, background corrected with the rolling ball method; single plane of a widefield stack, deblurred using nearest-neighbor method in ZEISS ZEN; single plane of a widefield stack, deconvolved using constrained iterative method in ZEISS ZEN. Approximate processing times of full 3-channel z-stack (relative values): BG-correction ( $\ll 1$  sec), deblurring (1 sec), deconvolution ( $\sim 10$  sec).

**B)** Intensity values of profile lines shown for all four processed images.

Image courtesy of R. Buschow, Max Planck Institute for Molecular Genetics, Berlin.

Meanwhile, processing times are very small—even for 3D deconvolution, the most sophisticated method.

### Conclusion

Confocal laser scanning microscopy or structured illumination methods (Apotome) use a sophisticated optical setup to allow acquisition of sharp images from single planes and of entire 3D volumes. 3D deconvolution approaches aim to take into account as much information as possible from the imaging system and the sample in order to reconstruct the 3D volume as accurately as possible. Typical post-processing methods such as background subtraction and unsharp masking, by way of contrast, are carried out in ignorance of how the image was acquired, what the properties of the imaging instruments were and what the sample type was. This inevitably leads to a loss of information, even if the image looks improved to the naked eye. Especially, if assumptions about diameter or size of structures in an image are false, then such processing steps will yield

	Image/ Experiment Preview	Segmentation, Simple Analysis**	Conference Presentation (Talk or Poster)	Advanced Image Analysis***	Publication in Journal
Unsharp Masking	●●	●	●●	–	–
Background Subtraction	●●●	●●●	●	●	–
Nearest-neighbor	●●	●●	●●	●●	●
3D Deconvolution (DCV)	●	●●	●●●	●●●	●●●●
Optical Sectioning*	●●	●●	●●●	●●●●	●●●●
Optical Sectioning + 3D DCV	●	●	●●●●	●●●●●	●●●●●

**Table 1** Typical suitability (relative to each other in terms of effort and quality) of clearing methods for widefield images. More points mean better suitability.

\* Apotome-like structured illumination, single- or multi-point laser scanning,

\*\* e.g. cell counting, nuclei or whole cell segmentation, area measurements.

\*\*\* e.g. co-localization analysis, 3D particle tracking, protein fine localization, intensity measurements.

incorrect results. In addition, these methods are all “exclusive”, which is to say they exclude photons from above and below the focal plane since they only take a single image into account. This exclusivity prevents their benefiting from the majority of photons in a 3D volume. In contrast to this, 3D deconvolution (as a “signal inclusive” method) will result in a high signal-to-noise and better contrast and resolution as a result of reassignment of photons from other planes to the current focal plane. Deblurring and background subtractions

(using the rolling ball or nearest-neighbor method, or other approaches) usually do a good job in improving threshold-based segmentation of images because they render the background even and remove blur around objects. Therefore, they play a valuable part in image analysis workflows. However, when using them to reveal and extract information from images in order to draw scientific conclusions from them, they should be complemented by an approach that models the 3-dimensional context of a sample (see table 1).

### Literature References:

- [1] Castleman, K. R., Digital Image Processing, Prentice-Hall, 1979
- [2] Sternberg, S., Biomedical Image Processing, IEEE Computer, Jan 1983
- [3] Agard, D. A. Optical Sectioning Microscopy: cellular architecture in three dimensions. Annual Review of Biophysics and Bioengineering 13: 191-219 (1984).
- [4] Russ, J.C., in The Image Processing Handbook (second edition), IEEE Press, 1994
- [5] Huang, C.-H., Ju, M.-S., Lin, C.-C. K., A Robust Algorithm for Removing Artifacts in EEG Recorded During FMRI/EEG Study, Comput Biol Med. 2012 Apr;42(4):458-67.
- [6] Cai F., Dam-based rolling ball with fuzzy-rough constraints, a new background subtraction algorithm for image analysis in microscopy, 2015 International Conference on Image Processing Theory, Tools and Applications (IPTA), DOI: 10.1109/IPTA.2015.7367151



**Carl Zeiss Microscopy GmbH**

07745 Jena, Germany  
microscopy@zeiss.com  
www.zeiss.com/zen