

# Site information

## SMEAR II stand

The "core" of the SMEAR II forest stand was established by sowing for pine after clearcut and prescribed burning in 1962. This stand is surrounded by pine-dominated coniferous stands established in 1960's . All these form the primary research stand that extends 150-300 m from the mast,

There was additional planting of pine in 1967, probably due to poor or spatially uneven regeneration. In the late 1960's the density of pine was probably in the order of 2500/ha. The early history of other tree species (spruce and deciduous trees) is unknown, they were naturally regenerated.

Next silvicultural measure was thinning of the northern part of the stand between 1991 and 1995.

In February-March 2002 approximately half of the study stand was thinned, see Vesala et al. (2006) for details.

To be continued...

## Soil properties

The soil is sandy loam, in most places <1 m thick.

horizon	upper depth (cm)	lower depth (cm)	clay (% mass)	silt (% mass)	sand (/% mass)	stone (% mass)	porosity (% volume)	field capacity (% volume)	wilting point (% volume)
O	-4	0							
A	0	5	6.34	29.17	38.32	26.17	48.9	30.38	8.52
B	5	26	6.24	28.78	36.92	28.06	50.8	28.33	11.61
C	26	60	7.17	26.9	31.38	34.54	37.8	29.07	10.06

Soil C and N in humus and uppermost 50 cm of mineral soil in the mini-catchment in 1996:

C 6.44 kg/m<sup>2</sup>

N 0.22 kg/m<sup>2</sup>

Soil C and N in humus layer and the uppermost 40 cm of mineral soil in Aug 2003, sampling location?

C 5.62 kg/m<sup>2</sup>

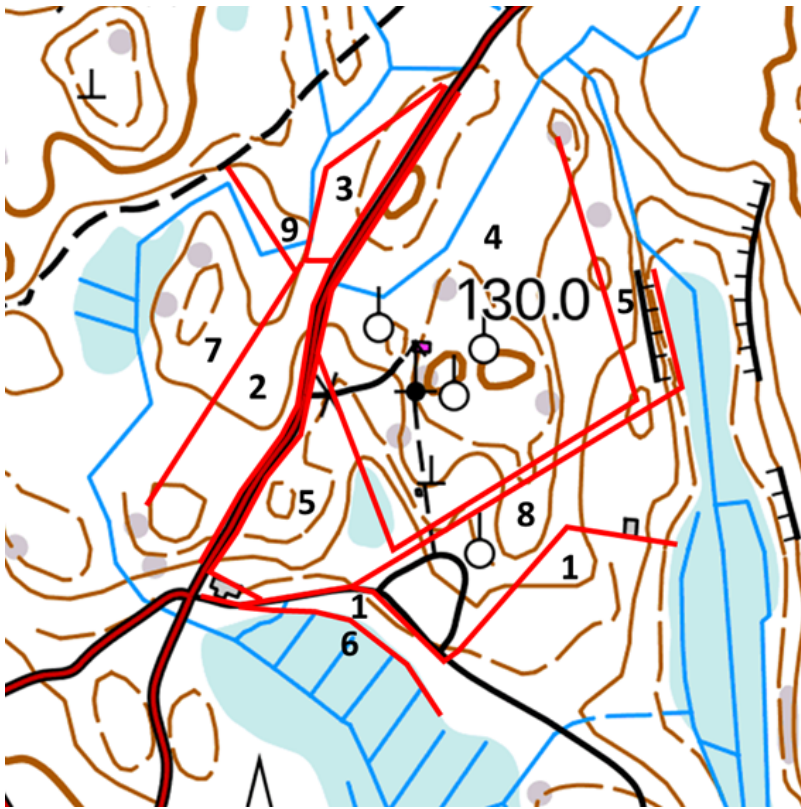
N 0.17 kg/m<sup>2</sup>

The differences mostly originate in

- sampling uncertainty due to different sampling locations
- different ways to correct for stoniness
- to small extent the additional 10 cm sampling depth in 1996

## Forest management history

SMEAR II stand (4) and the adjacent stands have different management histories



Stand number	Time of regeneration	Regeneration method	Species	Area ha (approx.) within 200 m of the SMEAR II mast
1	1920–1930	Natural	Mixture	0.2
2	1948	Natural	Scots pine	1.3
3	1957	Planting, saplings from Hyytiälä station	Scots pine	0.4
4 (SMEAR II)	1962	Sowing	Scots pine	5.6
5	1962	Planting, saplings from Hyytiälä station	Scots pine	1.5
6	1962–1966	Natural	Mixture	0.1
7	1962–1966	Natural	Scots pine	0.9
8	1973	Planting	Norway spruce-Scots pine mixture	2.3
9	1983	Natural, maybe also planting	Norway spruce/mixture	0.3