

Evolution with 365 calendar

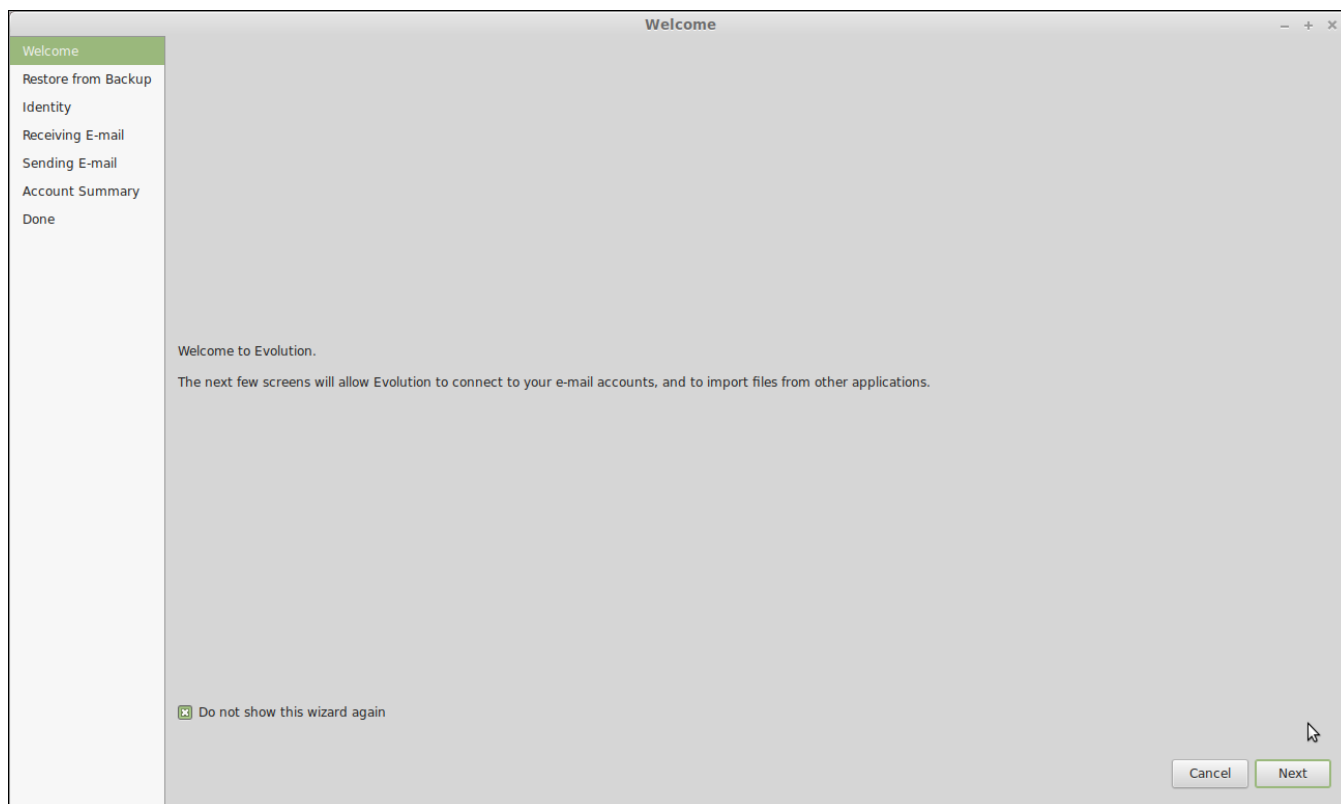
You will need to install evolution and evolution-ews for your distro.

Cubbli 18.04 has these by default.

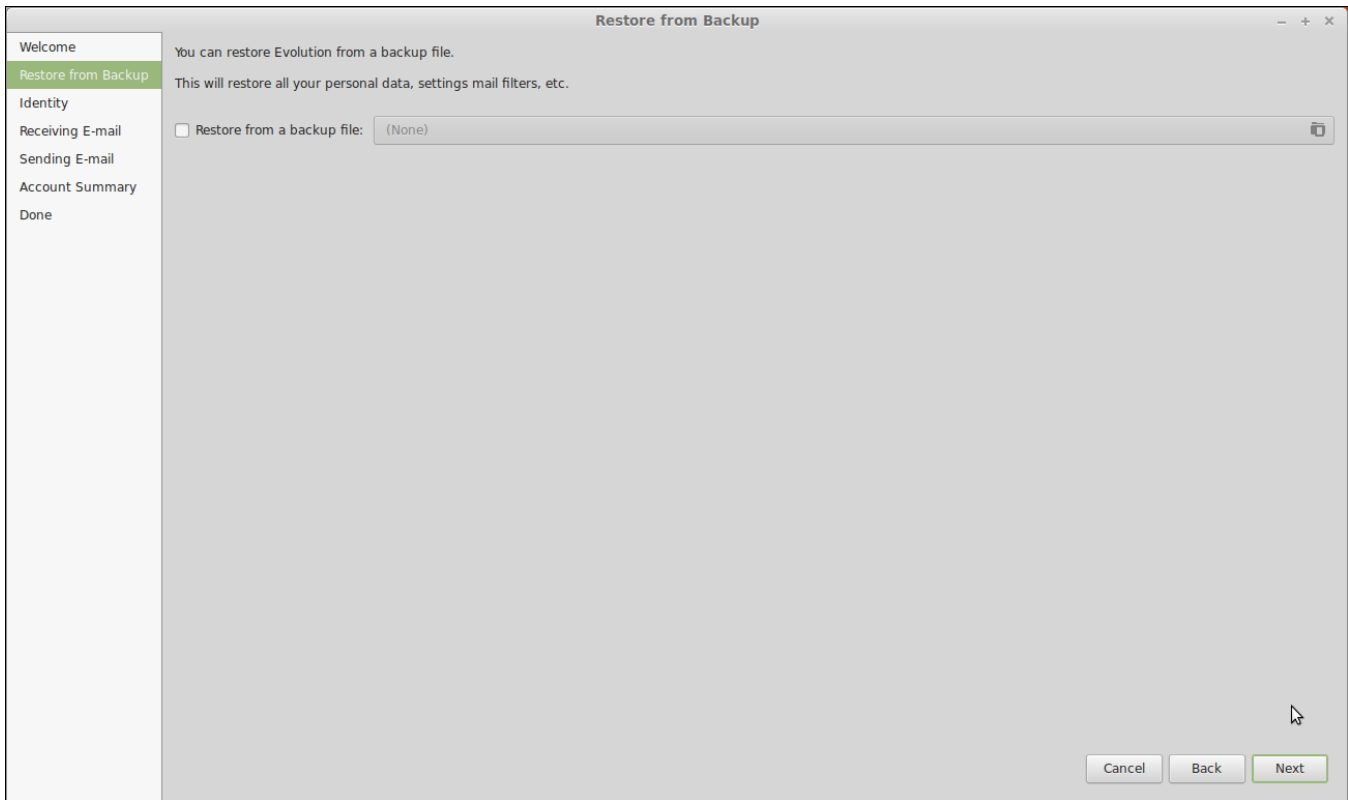
Open Evolution from the menu and it will start the wizard shown below.

Check: Do not show this wizard again.

Click Next.

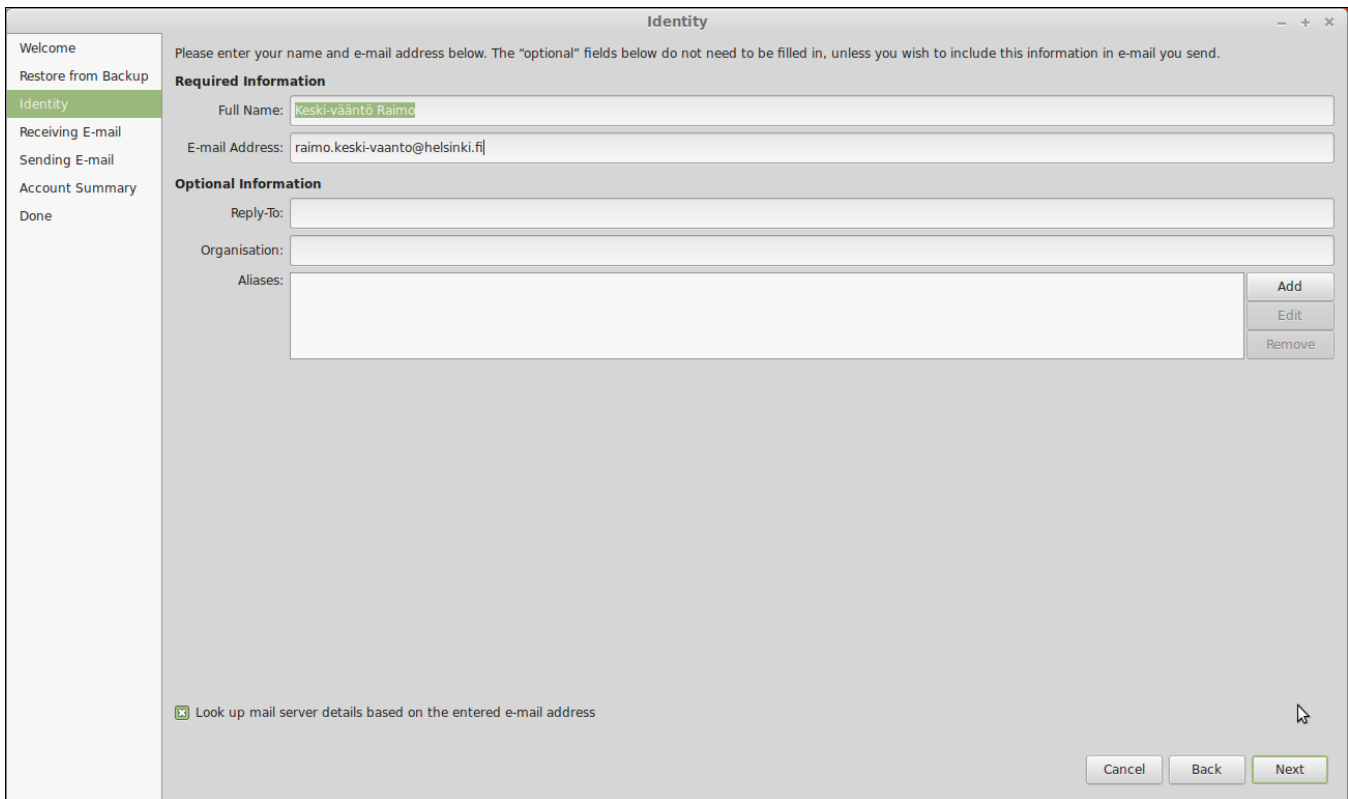


Click Next.



Full Name: Enter your name as you'd like it to appear.

E-mail Address: Enter your email address as shown in the picture `firstname.lastname@helsinki.fi`



Server Type: Exchange Web Services

Username: username@ad.helsinki.fi

Host URL: <https://outlook.office365.com/EWS/Exchange.asmx>

After you have typed correct host URL, click fetch URL.

Click Next.

Receiving E-mail

Server Type: Exchange Web Services

Description: For accessing Exchange servers using Web Services

Configuration

Username: rkeskiva@ad.helsinki.fi

Host URL: https://outlook.office365.com/EWS/Exchange.asmx Fetch URL

OAB URL: https://outlook.office365.com/OAB/488e37aa-c18e-4b7a-a7bf-d7e90a364920/oab.xml

Open Mailbox of other user

Search...

Authentication

Check for Supported Types NTLM

Cancel Finish Back Next

When prompted, enter your password and click **OK**

Authentication request

Authentication request

Please enter the password for account "raimo.keski-vaanto@helsinki.fi".
(host: exchange.helsinki.fi)

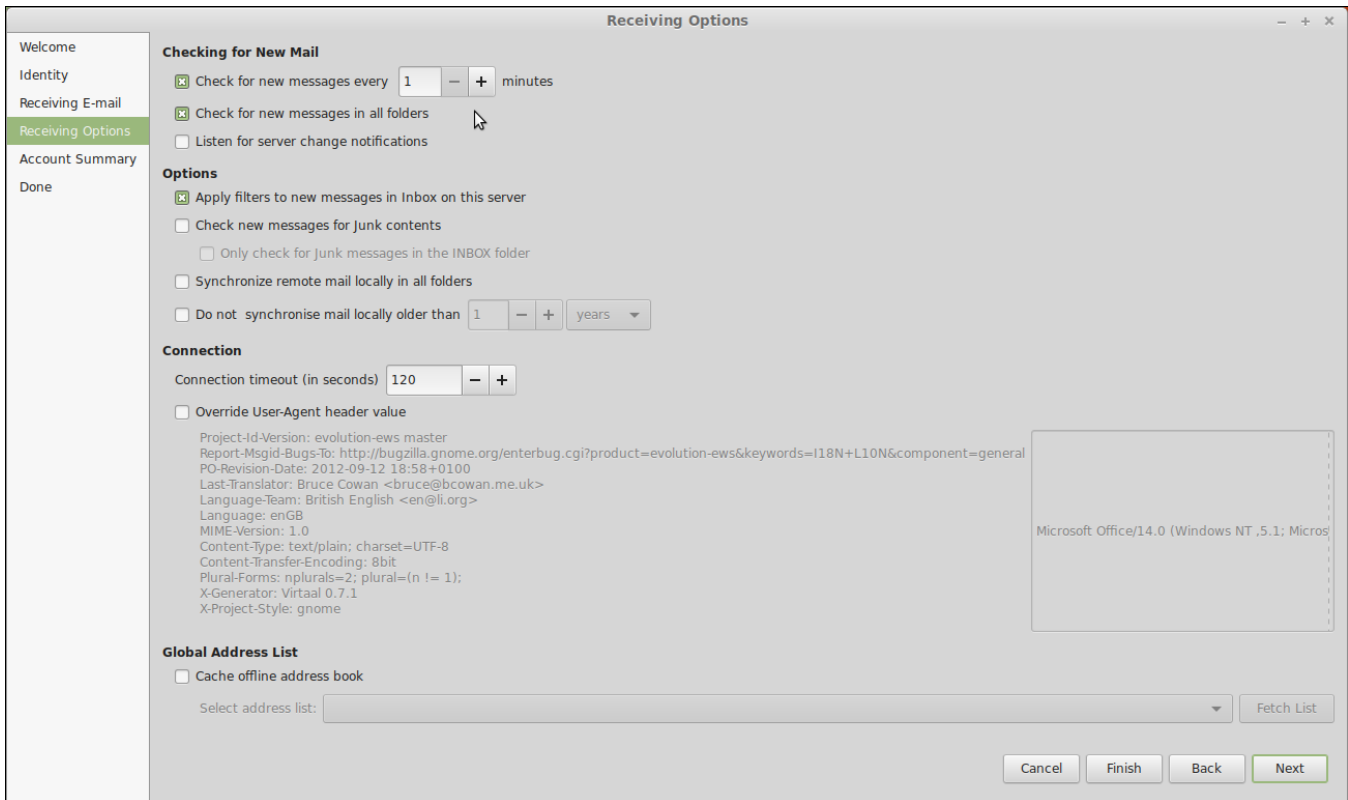
●●●●●●●●●●●●

Add this password to your keyring

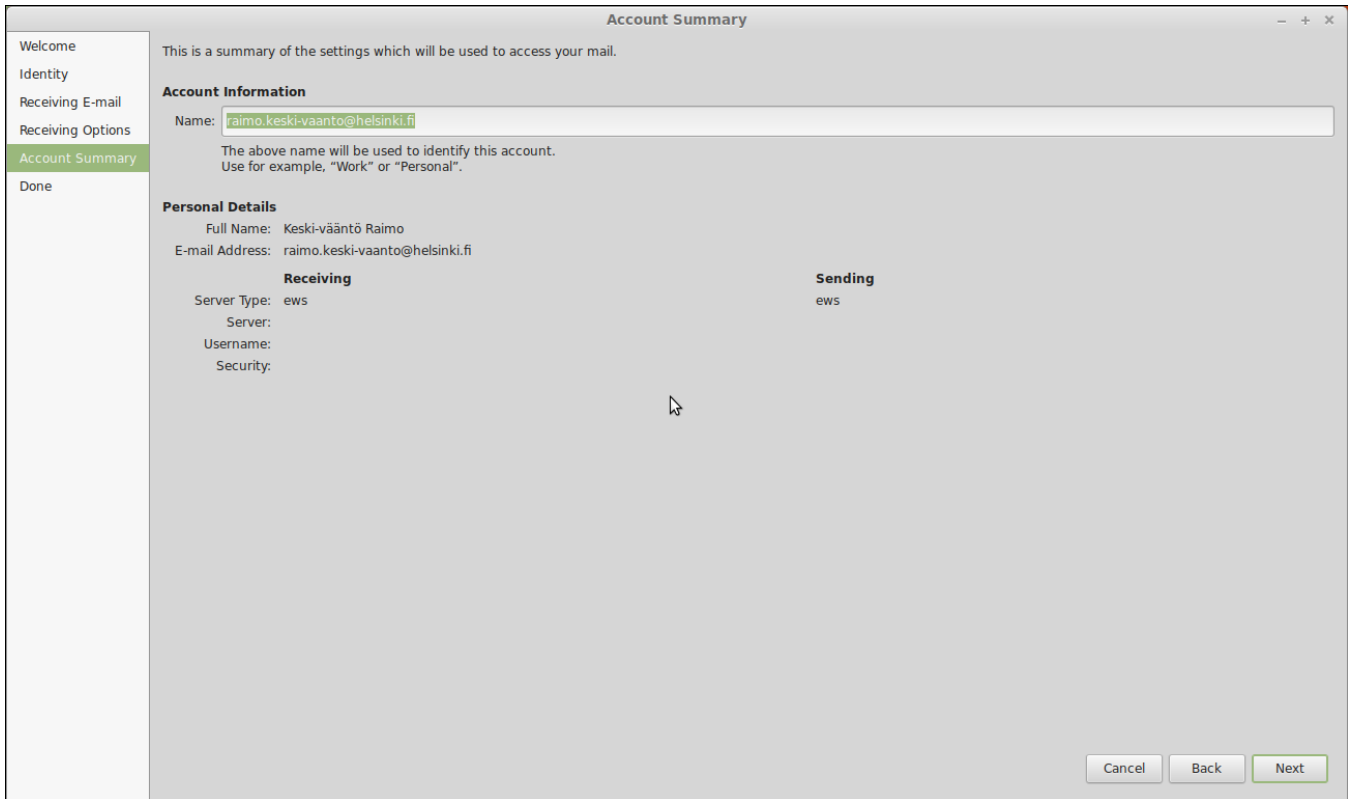
Cancel OK

Check for new messages every 60 minutes is default value, change it to 1 minutes.

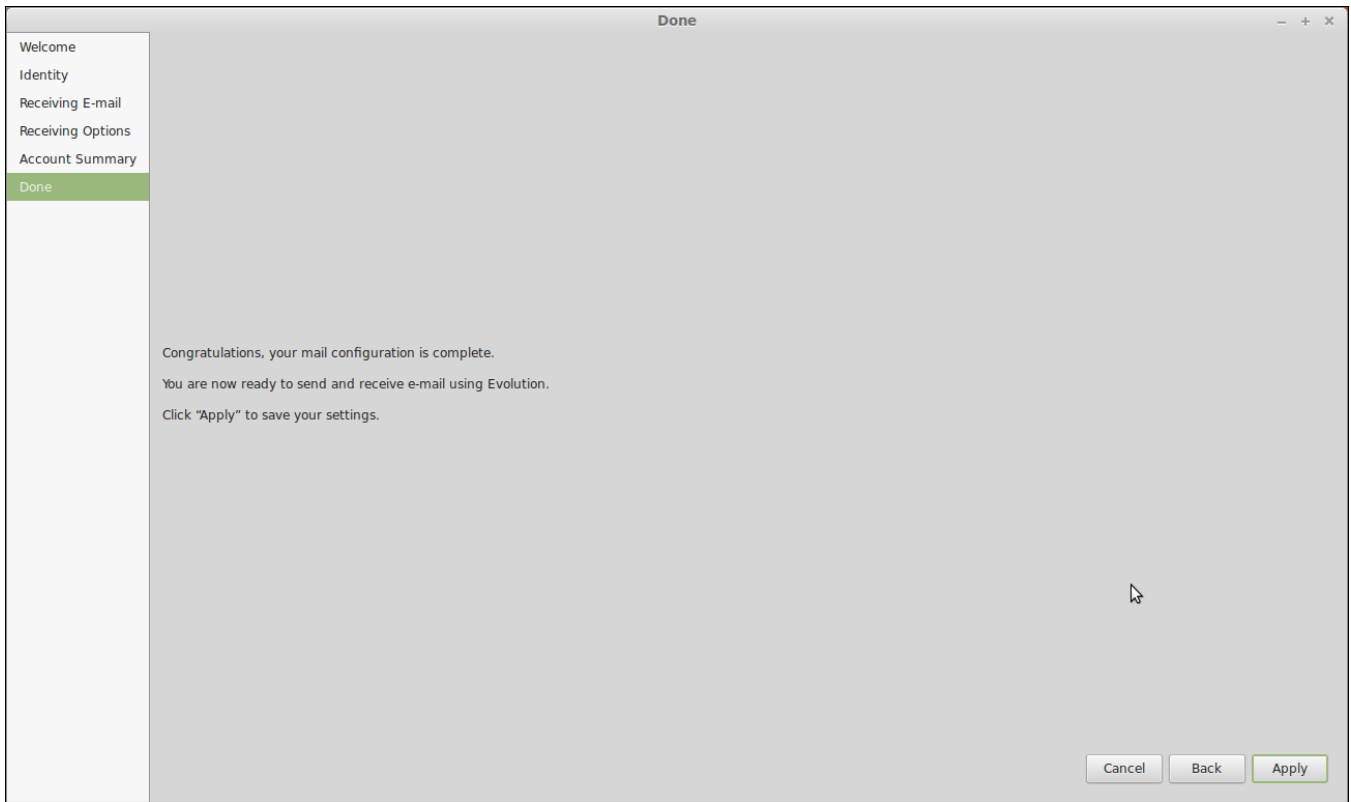
Click Next.



Click Next.



Click Apply.



Email and calendar will take some time to sync.