

Remote connection to HELMI 3D VM

Prerequisites

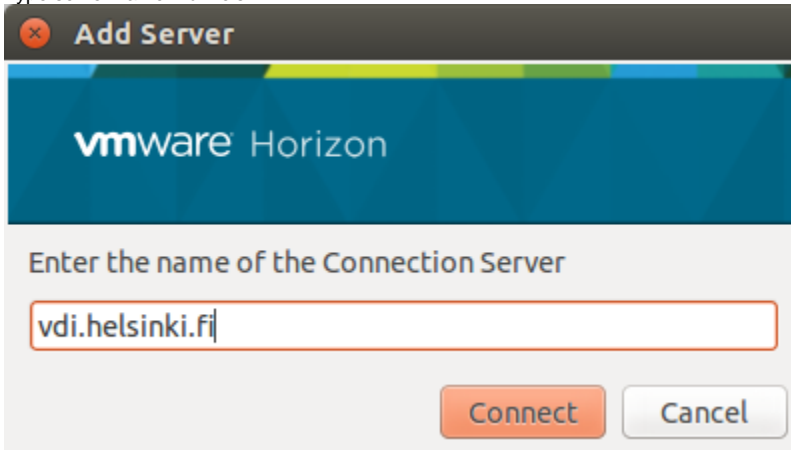
Install VMware Horizon Client from Software Portal if you don't have it on your computer already

If you are using windows, you should have a **vdi.helsinki.fi** already added and you can jump to

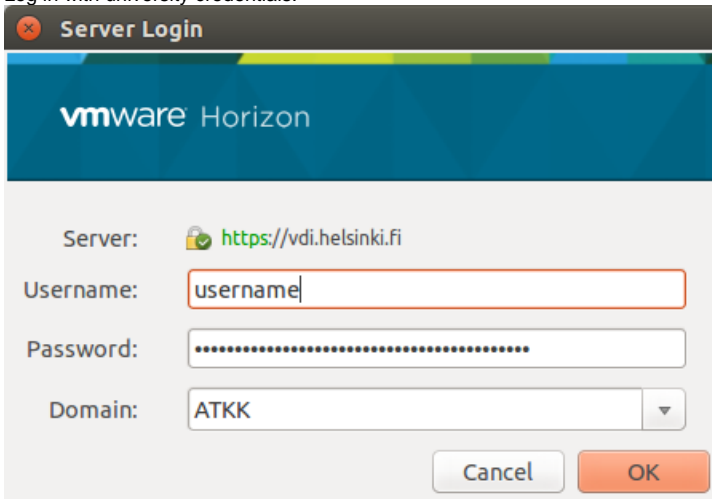
"Connecting to connection server after adding it".

Add connection server

- Start VMware Horizon Client.
- Click "New server".
- Type server name "vdi.helsinki.fi".



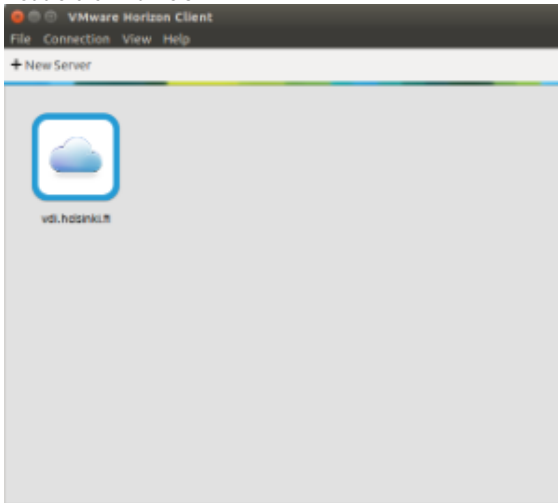
- Click "Connect".
- Log in with university credentials.



Connecting to connection server after adding it

- Start "VMware Horizon Client"

- Double-click "vdi.helsinki.fi"

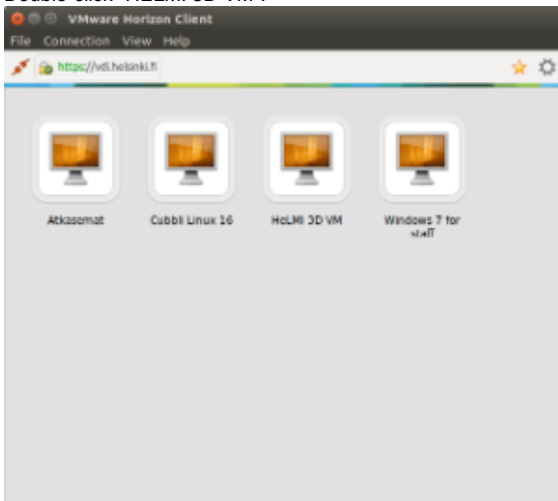


- Log in with university credentials if software asks it.

Connecting to the VM

After logging in to the connection server, you will be presented with a list of available VMs.

- Double-click "HELMI 3D VM".



- After the VM starts, you still need to log in to the [Open IRIS](#) agent, that is checking that you have a reservation for the machine. For this login you need to use your password for Open Iris.