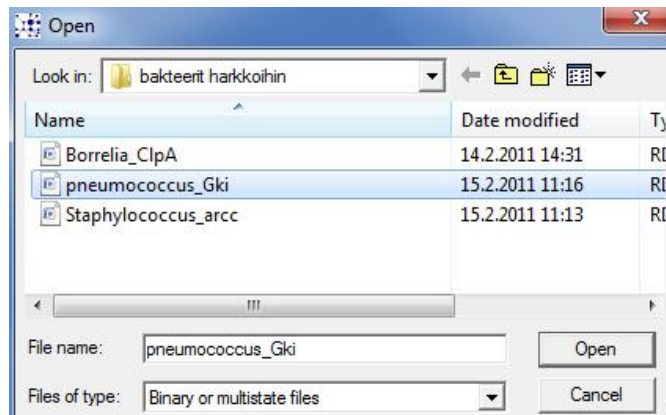


PRACTICAL INSTRUCTIONS FOR USING THE NETWORK-SOFTWARE

- The algorithms are explained in the paper "Median-joining networks.pdf" in course webpage. Very much used especially in human population histories (explained in lecture).
- The program Network4.6 is freely downloadable from <http://www.fluxus-engineering.com/sharenet.htm>. Some additional add-ons by charge, for example the required datafile format, rdf (which I have constructed for you by using another program, Dnasp5).
- The fileformat rdf includes the variable sites only plus some definitions (a typical haplotype-file).
- Save the rdf-file from your email. It need not be in Network-folder.
- All information given here is in the manual (in course webpage) in more detail.

PRACTICAL INSTRUCTIONS FOR USING THE NETWORK-SOFTWARE

- Datafile here →
- Choose “import rdf-file”,
 - “DNA-nucleotide data”
 - ”continue” →
to your own folder



and open the rdf-file you plan to use.

